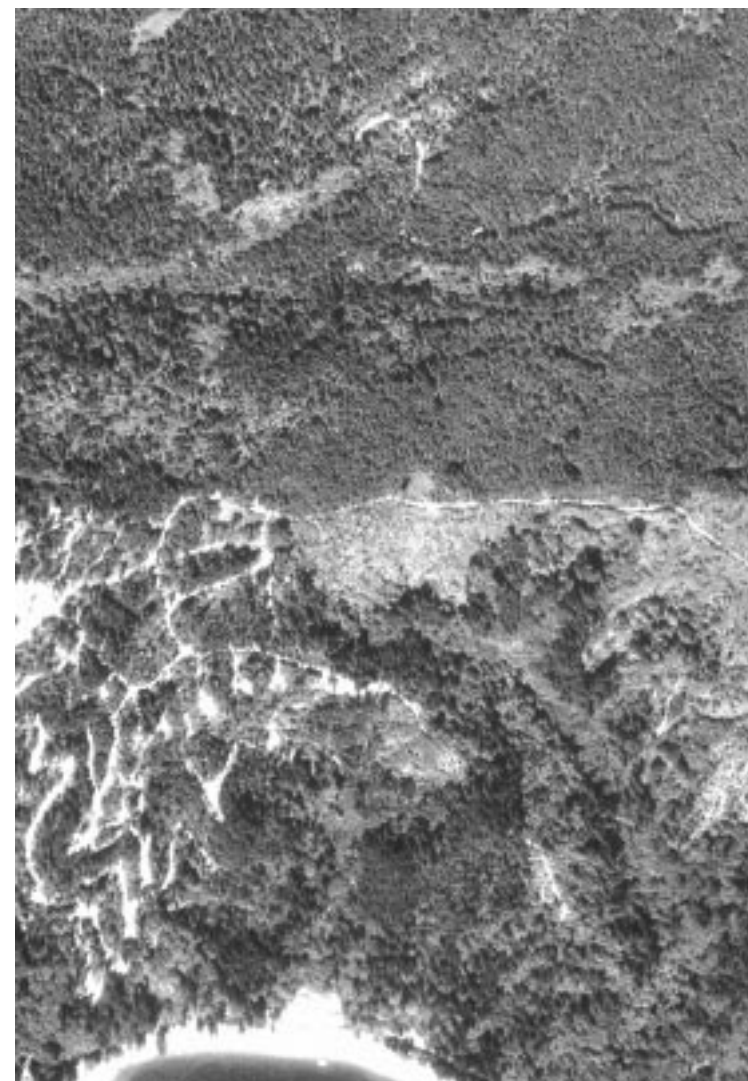
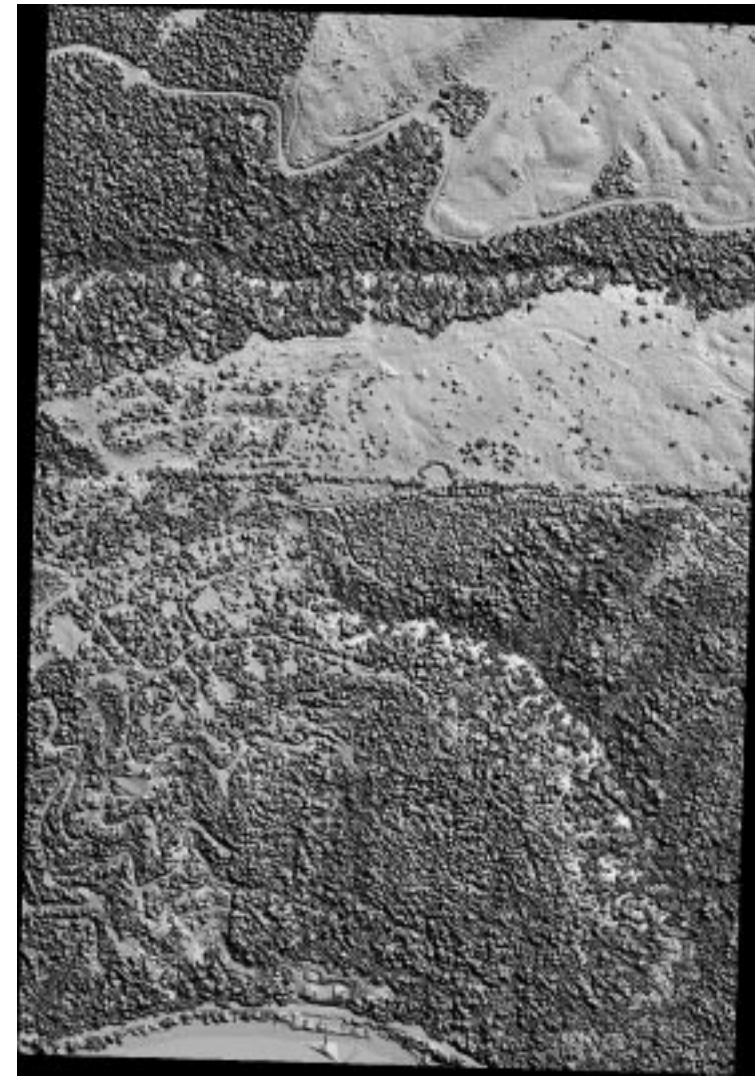


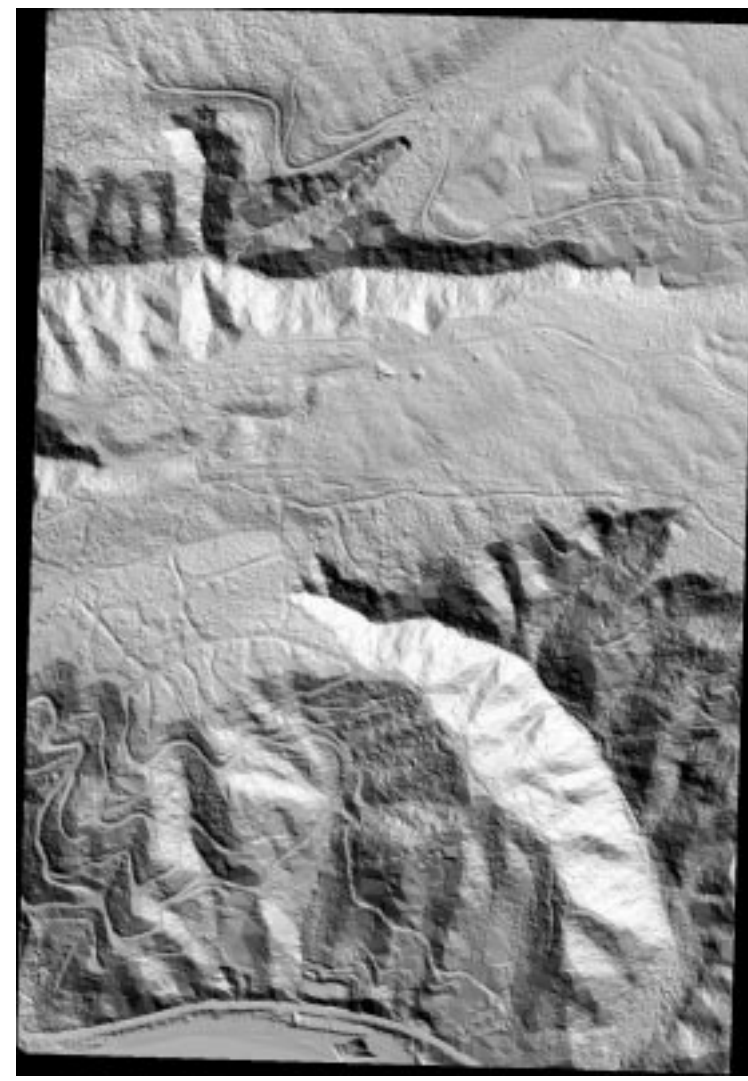
USGS 1-m DOQQ



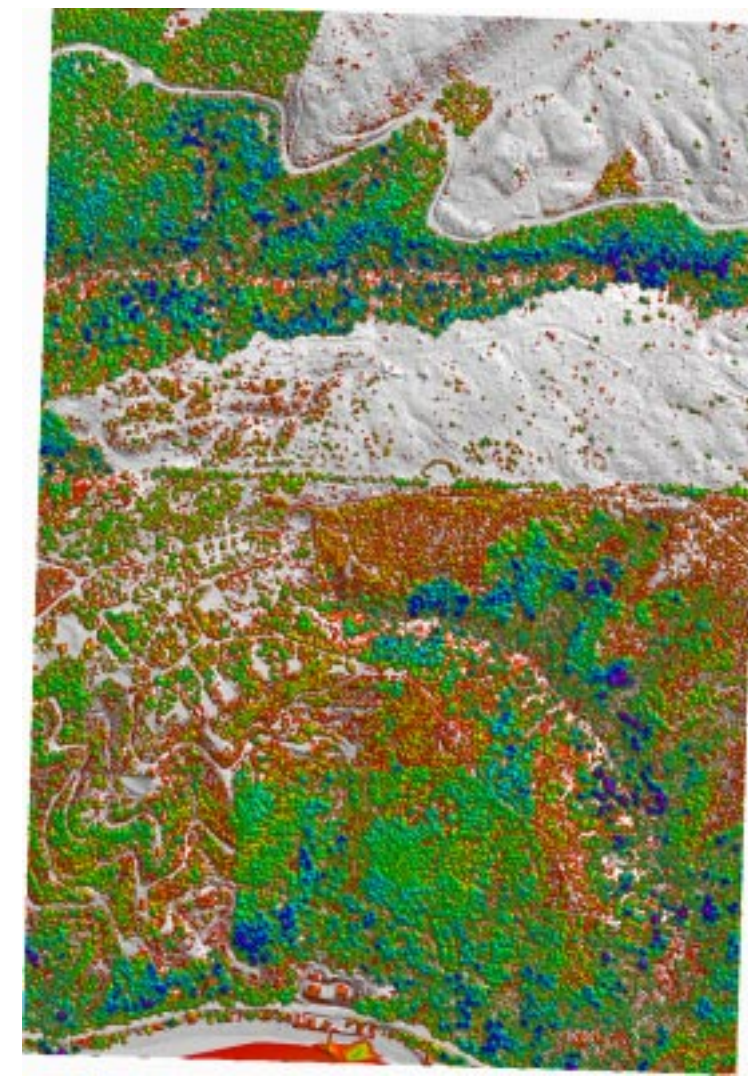
1st-return surface



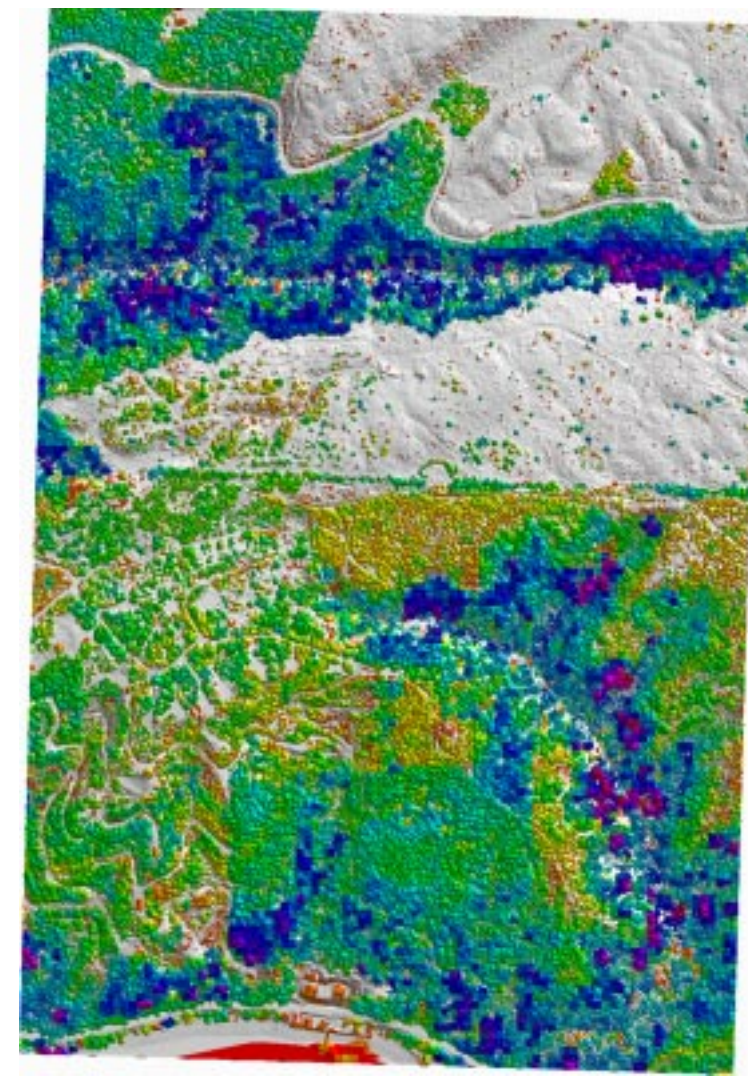
bare earth



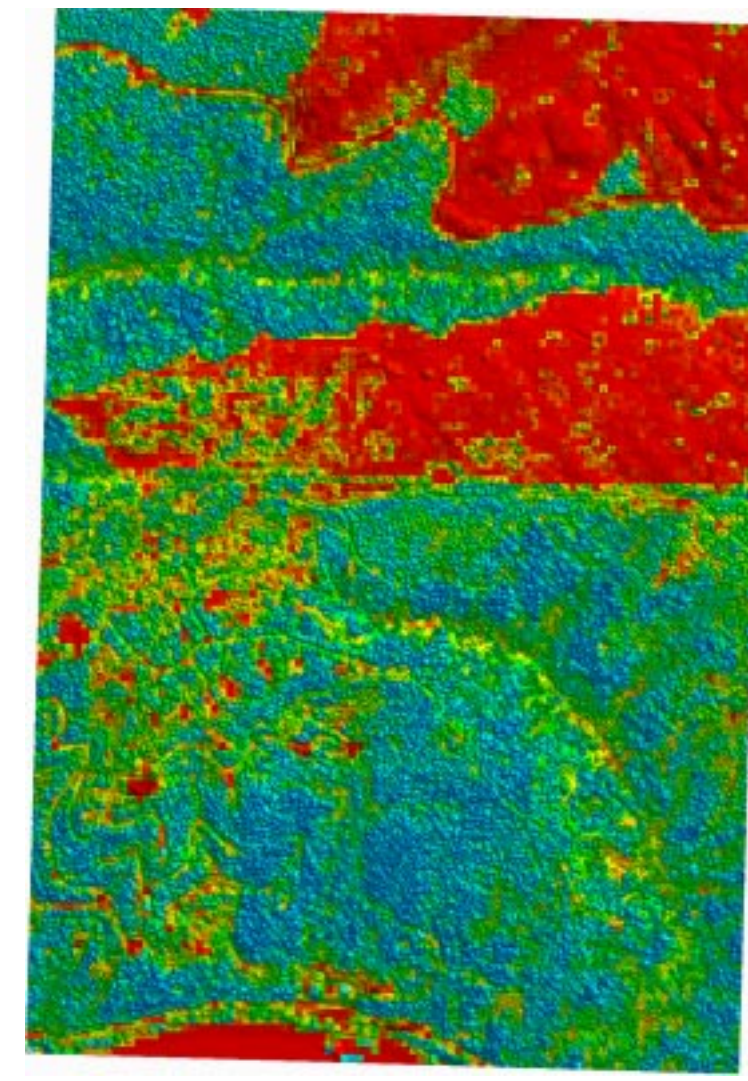
"height"  
1st-return surface minus bare earth



"height"  
90th percentile of 1st-return height  
aggregated on 10 m cells



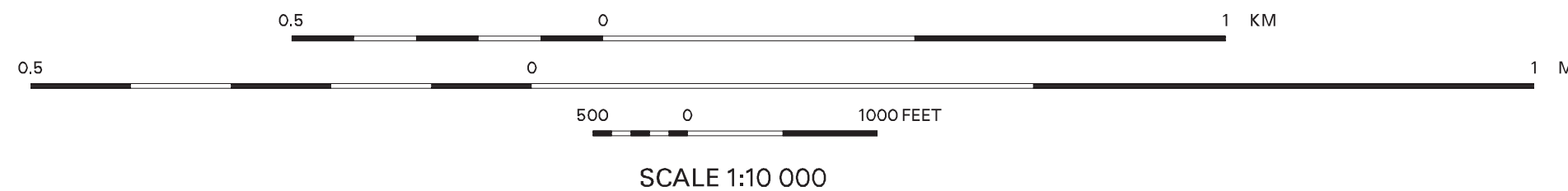
"% canopy cover"  
fraction 1st returns in canopy  
aggregated on 10 m cells



Oblique view of SW part  
WA Ecology Shoreline Aerial Photos server  
(<http://www.ecy.wa.gov/apps/shorephotos/index.html>)



1.3 million pulses  
2.7 million returns  
0.5 million ground returns



Forest analysis inspired by J.E. Means et al., 2000, Predicting forest stand characteristics with airborne scanning lidar: Photogrammetric Engineering & Remote Sensing, v. 66 n. 11, p. 1367-1371.

West of Tahuya, SW corner Kitsap Peninsula (Mason County), Washington  
Data from multiple-return laser altimeter, 0.9 m footprint, 1 pulse/m2